

EFCO CORPORATION

SERIES S526 STOREFRONT SYSTEM

FBC PRODUCT APPROVAL DRAWINGS

GENERAL NOTES:

1. THE PRODUCT HEREIN CONFORMS TO THE REQUIREMENTS FOR THE CURRENT EDITION OF THE FLORIDA BUILDING CODE INCLUDING HVHZ. TESTING WAS CONDUCTED TO THE FOLLOWING PERFORMANCE STANDARDS IN COMPLIANCE WITH THE CURRENT EDITION OF THE FLORIDA BUILDING CODE AS DOCUMENTED IN TEST REPORT NO. 0905.01-07, DATED 11/29/2007 BY AMERICAN TEST LAB OF SOUTH FLORIDA.
 - 1.1. TAS 201 - 1994
 - 1.2. TAS 202 - 1994
 - 1.3. TAS 203 - 1994
2. THE INSTALLATION DRAWINGS DEPICTED WITHIN ARE NECESSARY TO MEET THE STRUCTURAL LOAD REQUIREMENTS. PLEASE SEE THE MANUFACTURER'S INSTALLATION INSTRUCTIONS FOR SEALING, FLASHING AND DRAINAGE REQUIREMENTS.
3. THIS PRODUCT IS IMPACT RESISTANT AND THEREFORE AN APPROVED IMPACT PROTECTION SYSTEM IS NOT REQUIRED FOR THIS PRODUCT IF IT IS INSTALLED IN A WIND-BORNE DEBRIS AREA.
4. PRODUCT MAY BE INSTALLED TO UNLIMITED WIDTHS AS LONG AS THE OVERALL HEIGHT DOES NOT EXCEED 120". THE MAXIMUM STOREFRONT BAY WIDTH SHALL NOT EXCEED 60".
5. THE GLAZING FOR THESE UNITS SHALL COMPLY WITH ASTM E1300. TESTED GLAZING CONSISTED OF 1-5/16" THICK INSULATING LAMINATED GLASS CONSISTING OF 1/4" TEMPERED AT THE EXTERIOR - 1/2" ALUMINUM SPACER - 9/16" THICK LAMINATED LITE CONSISTING OF 1/4" HS GLASS - 0.090" KURARAY AMERICA SENTRYGLAS (SG) INTERLAYER - 1/4" HS TO THE INTERIOR AND IS IN CONFORMANCE WITH ASTM E1300-09a AT THE DESIGN PRESSURE STATED HEREIN.
6. MAXIMUM ALLOWABLE SHIM STACK TO BE 1/2". SHIM ALL SPACES IN EXCESS OF 1/16".
7. WOOD FRAMING INSTALLATIONS ARE ASSUMED TO BE 2X S-P-F (G=0.42) FOR NON-HVHZ AND 2X SOUTHERN PINE (G=0.55) FOR HVHZ OR DENSER. WOOD FRAMING SHALL BE GREATER THAN THE WINDOW FRAME WIDTH. TAPERED OR PARTIAL WOOD BUCKS ARE NOT ALLOWED FOR INSTALLATION INTO WOOD FRAMING. USE 3/8" LAG SCREWS WITH SUFFICIENT LENGTH TO OBTAIN A 3" PENETRATION. ANCHORS SHALL BE LOCATED AS DESCRIBED IN THE ELEVATION DETAIL.
8. CONCRETE INSTALLATIONS ASSUME A MINIMUM COMPRESSIVE STRENGTH FOR CONCRETE OF 2,500 PSI USE A 3/8" POWERS TAPPER ANCHOR FOR INSTALLATION INTO CONCRETE. THE ANCHOR SHALL HAVE A MINIMUM OF 1-3/4" EMBEDMENT. ANCHORS SHALL BE LOCATED AS DESCRIBED IN THE ELEVATION DETAIL.
9. METAL FRAMING INSTALLATION SHALL BE A MINIMUM OF 18 GAUGE 33 KSI STRENGTH METAL. USE A 3/8-12 GRADE 2 SELF-DRILLING SCREW WITH SUFFICIENT LENGTH TO ACHIEVE FULL PENETRATION OF THE METAL FRAMING AND EMBED 1/4" BEYOND THE DRILL POINT.
10. CORROSIVE RESISTANT FASTENERS SHALL BE USED.
11. STOREFRONT FRAME MATERIAL SHALL BE EITHER 0.093" THICK 6063-T6 ALUMINUM.
12. UNITS SHALL BE INSTALLED AS DESCRIBED IN THESE INSTALLATION INSTRUCTIONS AND ALSO IN CONFORMANCE TO THE MANUFACTURER'S PUBLISHED INSTALLATION INSTRUCTIONS.
13. THE INSTALLATION DETAILS DESCRIBED HEREIN ARE GENERIC AND MAY NOT REFLECT ACTUAL CONDITIONS FOR A SPECIFIC SITE. IF SITE CONDITIONS CAUSE INSTALLATION TO DEVIATE FROM THE REQUIREMENTS DETAILED HEREIN, A LICENSED ENGINEER OR ARCHITECT SHALL PREPARE SITE SPECIFIC DOCUMENTS FOR USE WITH THIS DOCUMENT.
14. ALL SETTING BLOCKS AND GASKET MATERIALS SHALL BE IN COMPLIANCE WITH THE CURRENT EDITION OF THE FLORIDA BUILDING CODE. SETTING BLOCKS SHALL BE NEOPRENE WITH A 70 TO 90 SHORE A DUROMETER. GASKET MATERIALS SHALL BE EDPM WITH A MINIMUM 60 SHORE A DUROMETER.

PERFORMANCE RATING		
OVERALL GLASS SIZE	DESIGN PRESSURE (PSF)	IMPACT RATING
58 ⁵ / ₈ " x 28 ⁵ / ₈ " (UPPER LITE) 58 ⁵ / ₈ " x 86 ¹ / ₈ " (LOWER LITE)	+80.0 / -75.0	LARGE AND SMALL MISSILE IMPACT
MAXIMUM D.L.O. SIZE: 57 ¹ / ₂ " x 27 ¹ / ₂ " (UPPER LITE) MAXIMUM D.L.O. SIZE: 57 ¹ / ₂ " x 85" (LOWER LITE)		

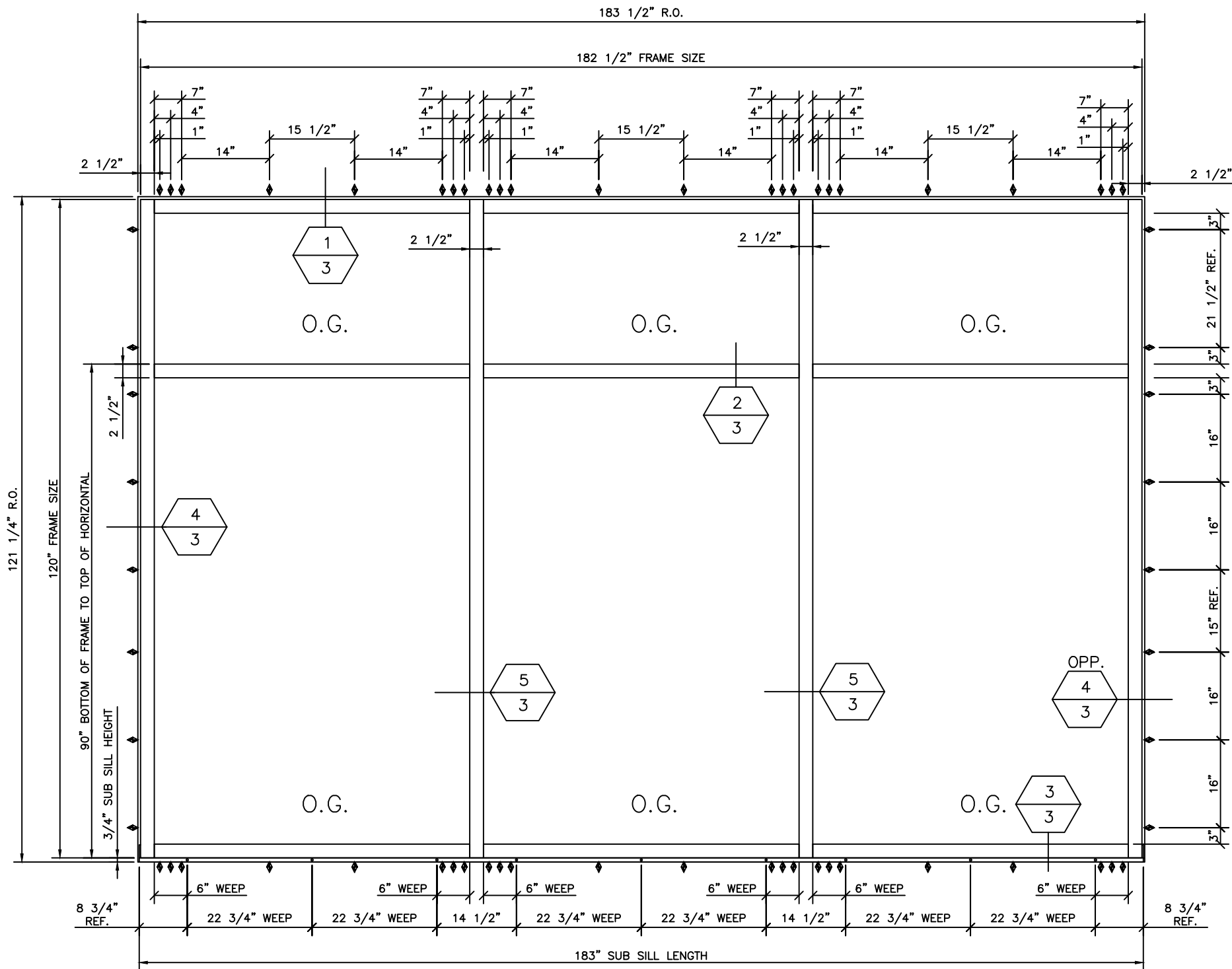
ANCHOR SCHEDULE AND DESCRIPTION				
SUBSTRATE	ANCHOR	EMBEDMENT	ANCHOR SPACING	EDGE DISTANCE
WOOD FRAMING	3/8" LAG SCREW	MINIMUM 3"	MINIMUM 2"	MINIMUM 2"
CONCRETE	3/8" TAPPER (POWERS FASTENERS)	MINIMUM 1-3/4"	MINIMUM 3"	MINIMUM 4"
STEEL STUD	3/8-12 GR 2 SMS	MINIMUM 1"	MINIMUM 2"	MINIMUM 2"

TABLE OF CONTENTS	
SHEET	SHEET DESCRIPTION
1	GENERAL NOTES, INSTALLATION NOTES, TABLE OF CONTENTS
2	ELEVATIONS AND GLAZING DETAILS
3	INSTALLATION DETAILS

Robert J. Amoruso, P.E.
Florida P.E. No. 49752

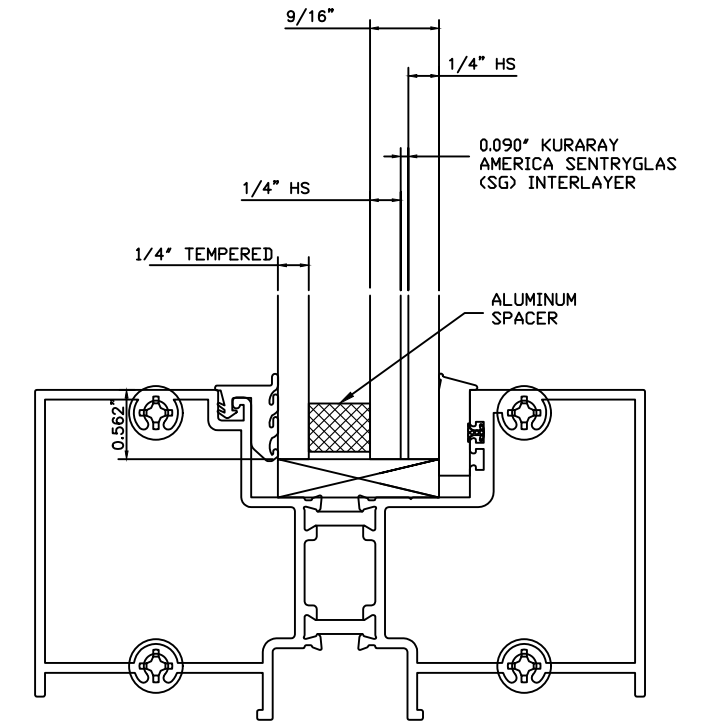
PTC PRODUCT DESIGN GROUP, LLC
PO BOX 520775 | LONGWOOD, FLORIDA 32752
FBPE C.A. NO. 25935
Phone: 321.690.1788 | Email: info@ptc-corp.com

©2018 EFCO A PELLA COMPANY ALL RIGHTS RESERVED



ELEVATION AND ANCHOR LOCATIONS

NOTE:
STOREFRONT SYSTEM IS LIMITED TO A
MAXIMUM HEIGHT OF 120". STOREFRONT MAY BE
INSTALLED TO AN INFINITE LENGTH PROVIDED THE
MAXIMUM BAY WIDTH DOES NOT EXCEED 60".



GLAZING DETAILS

NOTE: GLAZING MUST COMPLY WITH ASTM
E1300 FOR THE GIVEN DESIGN PRESSURE.

GLASS DESCRIPTION

1 5/16" INSULATED GLASS: 1/4" TEMP AT THE EXTERIOR / 1/2" AIR SPACE WITH AN ALUMINUM SPACER AROUND PERIMETER OF GLASS / 9/16" LAMINATED GLASS (1/4" CLEAR HS / 0.090" SENTRYGLAS (SG) INTERLAYER BY KURARAY AMERICA / 1/4" CLEAR HS AT THE INTERIOR)

THE FIXED LITES WERE DRY GLAZED WITH GLAZING GASKETS MEETING THE REQUIREMENTS OF NOTE 14. SETTING BLOCKS WHERE REQUIRED MEET THE REQUIREMENTS OF NOTE 14.

Robert J. Amoruso, P.E.
Florida P.E. No. 49752

PTC PRODUCT DESIGN GROUP, LLC
PO BOX 520775 | LONGWOOD, FLORIDA 32752
FBPE C.A. NO. 25935
Phone: 321.690.1788 | Email: info@ptc-corp.com

©2018 EFCO A PELLA COMPANY ALL RIGHTS RESERVED

DRAWN BY DAS CHECKED BY RJA
DATE 4-24-18 DATE 05-29-18

SCALE NTS

REV. ORIGINAL ISSUE

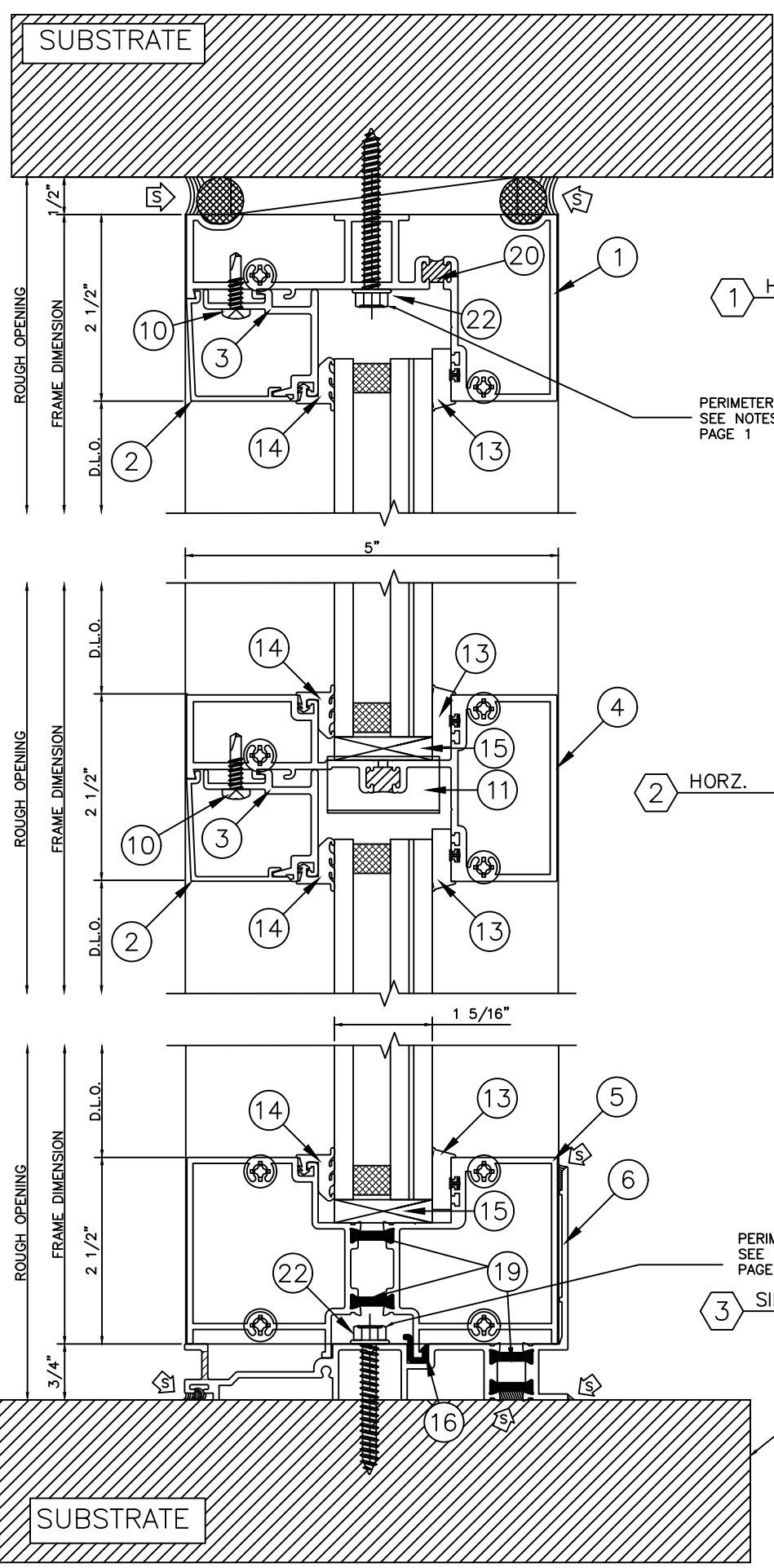


EFCO CORPORATION
1000 County Road - Monett, Missouri 65708

SERIES S526 STOREFRONT SYSTEM
FBC INSTALLATION DRAWINGS
ELEVATIONS AND GLAZING DETAILS

DRAWING NO. EFCO-019

SHEET 2 OF 3



SUBSTRATE
SEE NOTES
ON PAGE 1

1 HEAD

PERIMETER ANCHORS
SEE NOTES ON
PAGE 1

2 HORZ.

PERIMETER ANCHORS
SEE NOTES ON
PAGE 1

3 SILL

SUBSTRATE
SEE NOTES
ON PAGE 1

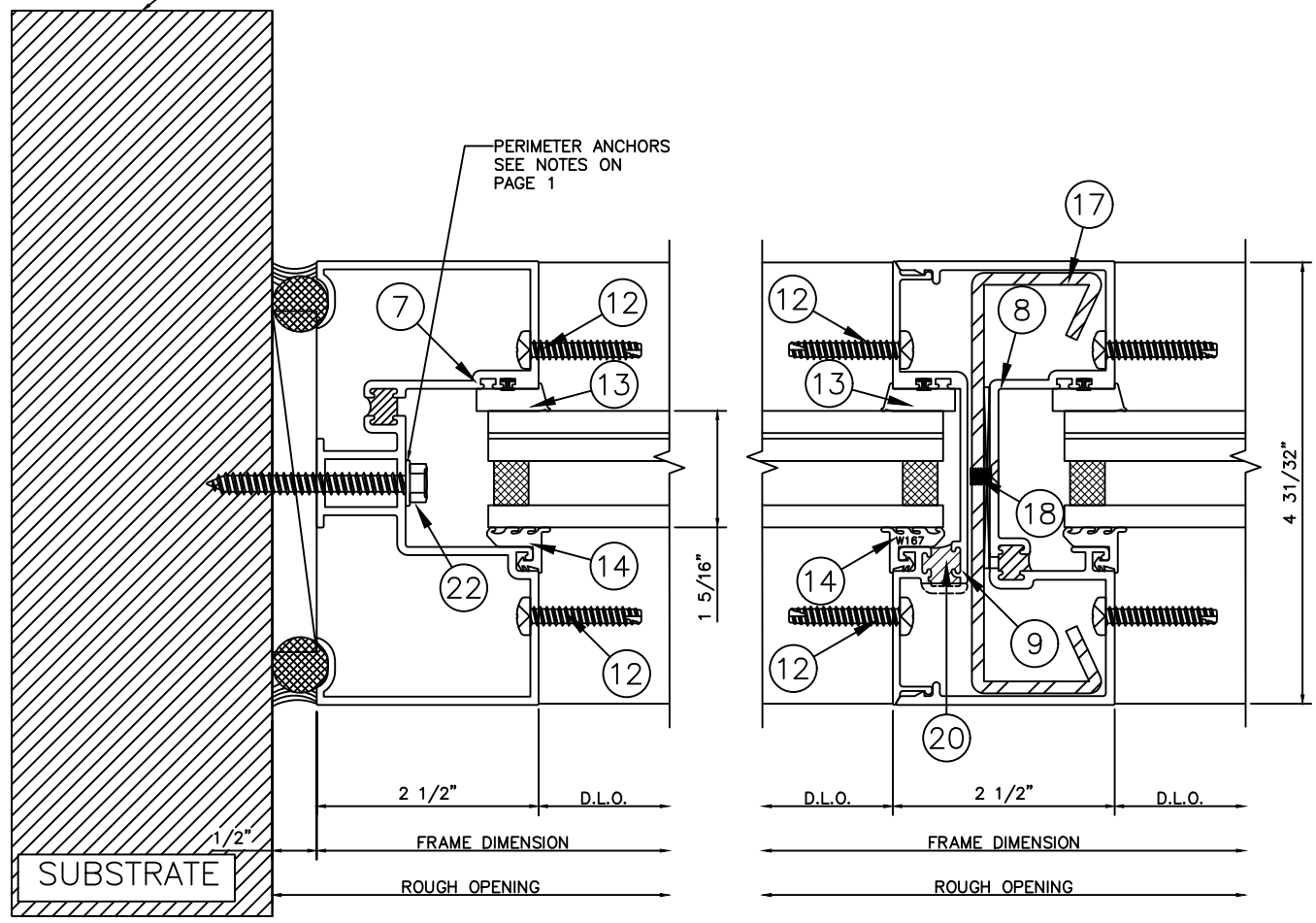
SUBSTRATE
SEE NOTES
ON PAGE 1

PERIMETER ANCHORS
SEE NOTES ON
PAGE 1

4 JAMB

5 VERT. MULLION

ITEM	# REQD	PART #	DESCRIPTION	MFG.
1	3	16G2	FRAME HEAD	EFCO
2	6	16G4	GLAZING STOP COVER	EFCO
3	6	16G3	GLAZING STOP	EFCO
4	3	16H2	FRAME HORIZONTAL	EFCO
5	3	4G77	FRAME SILL	EFCO
6	1	4G79	FRAME SUB SILL	EFCO
7	2	16G1	FRAME JAMB	EFCO
8	2	16G8	FRAME VERTICAL MULLION	EFCO
9	2	16G9	FRAME VERTICAL MULLION FILLER	EFCO
10	20	SDR1	#10 TEK ASSY SCREW	PRO FAS
11	6	FWB0	WATER DEFLECTOR	EFCO
12	54	STC8	#12 ASSY SCREW	PRO FAS
13	AS REQD	W167	FRAME PUSH IN GASKET	CENTRAL PLASTICS
14	AS REQD	W146	FRAME PRE SET GASKET	CENTRAL PLASTICS
15	12	HEP0	SETTING BLOCKS	EPG
16	6	HCO3	THERMAL ISOLATER (SILL)	CENTRAL PLASTICS
17	2	526SS	STEEL AT SCREW SPLINE VERTICAL	EFCO
18	6	MFMO	#10-24 X 5/16" PL-FH-MS 18-8 UC	PRO FAS
19	AS REQD	LAA3	THERMAL STRUT	
20	AS REQD		2 PART POLYURETHANE	BSAF
21	AS REQD		SILICONE	
22			PERIMETER ANCHORAGE	
24	2	KP00	S526 END DAM PKG (NOT SHOWN)	EFCO
26	2	NP1	HD ANCHOR/STABILIZER (NOT SHOWN)	EFCO



Robert J. Amoruso, P.E.
Florida P.E. No. 49752

PTC PRODUCT DESIGN GROUP, LLC
PO BOX 520775 | LONGWOOD, FLORIDA 32752
FBPE C.A. NO. 25935
Phone: 321.690.1788 | Email: info@ptc-corp.com

DRAWN BY DAS	CHECKED BY RJA	SCALE NTS	REV.
DATE 4-24-18	DATE 05-29-18		ORIGINAL ISSUE

EFCO CORPORATION
1000 County Road - Monett, Missouri 65708

©2018 EFCO A PELLA COMPANY ALL RIGHTS RESERVED
SERIES S526 STOREFRONT SYSTEM
FBC INSTALLATION DRAWINGS
INSTALLATION DETAILS

DRAWING NO. EFCO-019	SHEET 3 OF 3
-------------------------	-----------------